

ADVANCED DIPLOMA IN PHYSIOTHERAPY TECHNOLOGY

COURSE OVERVIEW

The course comprises of **50 classes**, spread over **12 months** covering **12 modules** with **100 hours** of theory & practical classes. The course covers all the basic medical subjects along with physiotherapy lessons in specific disease conditions. Details are given in the Course Outline.

COURSE OUTLINE

Module :1 Anatomy

- Introduction
- Bones & Joints
- Nervs & Muscles
- Surface Anatomy

Module :2 Physiology

- Introduction
- Cells and tissues
- Muscle Physiology
- Nervous System
- Pain Physiology
- Cardio Pulmonary System

Module :3 Pathology

- Introduction
- Inflammation
- Tissue & Bone healing



Module :4 Pharmacology

- Introduction
- Analgesics
- Muscle relaxants
- Nutritional Supplement

Module :5 Biomechanics

- Introduction
- Basic Concepts
- Joint Measurements
- Muscle Power Measurements



Module :6 Exercise Therapy

- Basic Concepts
- Mobilization, Manipulation & Massage
- Stretching
- Aerobics
- Resistive exercises
- Specialized Exercises
- Chest Therapy

Module :7 Electrotherapy

- Introduction & Basic Concepts
- Heat and Cold
- Radiotherapy
- Electro therapeutic Modalities
- UST
- Traction



Module :8 Physiotherapy in Musculoskeletal conditions

- Arthritis
- Fractures
- Degenerative conditions
- Sports Conditions
- Soft tissue injuries

Module :9. Physiotherapy in Neurological conditions

- Stroke
- Parkinson's
- TBI & SCI
- CP

Module :10 Physiotherapy in Chest, Surgical & Specialized Conditions

- COPD
- RLD
- General Surgery
- Burns

Module :11 General Rehab

- Introduction & Basic Concepts
- Orthotic devices

Module :12 Clinical Reasoning

- Clinical approaches
- History taking
- Clinical examination
- Identifying Red flags



SCHEDULE OF CLASSES

Class 1 & 2 (4 hours Theory)

- General Introduction & Orientation
- Definition of Physiotherapy & its application
- Definition & Classification of Exercise & Electro Therapy

Class 3 & 4 (4 hours Theory)

- Basic Anatomical concepts
- Bones and Joints UL
- Nerves and Muscles UL

Class 5 & 6 (4 hours Theory)

- Bones and Joints LL
- Nerves and Muscles LL
- Vertebral Column
- Head Neck

Class 7 & 8 (4 hours Practical)

- Demonstration of Imp Concepts
- Surface Anatomy with important landmarks

Class 9 & 10 (4 hours Theory)

- Cells and tissues
- Bone & Muscle tissues
- Muscle and Exercise Physiology



Class 11 & 12 (4 hours Theory)

- Nervous System
- Pain Physiology
- Cardio Pulmonary System

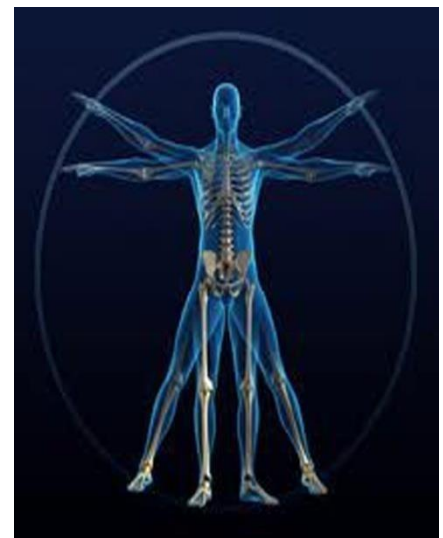


Class 13 & 14 (4 hours Theory)

- Introduction to Pathology
- Inflammation
- Tissue and Bone healing
- Basic Concepts in Pharmacology
- Analgesics
- Muscle Relaxants
- Nutritional Supplements

Class 15 & 16 (4 hours Theory)

- Introduction to Biomechanics & Basic Concepts
- Joint structure and function
- Muscle function



Class 17 & 18 (4 hours Practical)

- Joint Range measurements
- Muscle power Testing

Class 19 & 20 (4 hours Theory)

- Introduction, Basic Concepts and Classification
- Massage & Stretching

Class 21 & 22 (4 hours Theory)

- Mobilization & Manipulation

Class 23 & 24 (4 hours Practical)

- Demonstration of all the Exercise Therapy Techniques on live subject



Class 25 & 26 (4 hours Theory)

- Resistive exercises
- Specialized Exercises
- Chest Therapy

Class 27 & 28 (4 hours Practical)

- Demonstration of all the Exercise Therapy Techniques on live subject

Class 29 & 30 (4 hours Theory)

- Introduction, Basic Concepts and Classification
- Heat and Cold
- Radiation therapy



Class 31 & 32 (4 hours Theory)

- UST
- High, Low & Mid frequency currents
- Traction

Class 33 & 34 (4 hours Practical)

- Demonstration of all the Electro therapeutic Modalities

Class 35 & 36 (4 hours Practical)

- Demonstration of all the Electro therapeutic Modalities

Class 37 & 38 (4 hours Theory)

- Physiotherapy in Orthopedic conditions

Class 39 & 40 (4 hours Theory)

- Physiotherapy in Neurological conditions

Class 41 & 42 (4 hours Theory)

- Physiotherapy in Chest, Surgical and Specialized Conditions



Class 43 & 44 (4 hours Theory)

- Introduction to General Rehabilitation and Basic Concepts
- Orthotic devices and their classification

Class 45 & 46 (4 hours Theory)

- Clinical approaches
- History taking
- Clinical examination
- Identifying Red flags

Class 47 & 48 (4 hours Practical)

- Demonstration of Clinical approach

Class 49 & 50 (4 hours Practical)

- Conclusion
- Q&A Session
- Practical Doubt Clearing session.



	THEORY	PRACTICAL S	TOTAL
CLASSES	38	12	50
DURATION	76 hrs	24 hrs	100 hrs

SCHEME OF EXAMINATION

Theory: 70 marks

Viva Voce: 20 marks

Project Work: 10 marks

Total: 100 marks

STUDY MATERIALS

Notes, reference books & study materials will be provided by the institute.

ROTATIONAL INTERNSHIP

Optional Internship opportunity will be provided with the various tied up hospitals for practical work experience in OPDs & IPDs on rotational basis.

Course fees: 22000 (approx.)

Required Documents for Admission:

- 4 Copies Passport Size Colour Photo
- Xerox copy of MP and HS Admit, Marksheet, Registration, Certificate
- Xerox copy of Aadhar Card or Voter ID
- Blood Group

* If you want to enroll online then you need to submit bank account number below rupee 1000 and fill the form with transaction ID and upload transaction screenshot.

Bank Details:

Bank Name - Bank of India

Account holder Name - Sipra das

Bank Account Number - 413610110007279

IFSC CODE - BKID0004198

Quick Contact

91-7003200317

91-8902052928

EMAIL :- contact.activelifesonarpur@gmail.com



Active Life

Physiotherapy Clinic

&

Academy of Physiotherapy Technology

(Affiliated to Bharat Sevak Samaj)

Reg No : WB/8964